



Installation Instructions Logs and Wattles™

Step 1 - Site Preparation

Prepare site to design profile and grade. Remove debris, rocks, clods, etc.. Ground surface should be smooth prior to installation to ensure log remains in contact with slope.

Step 2 - Staple Selection

At a minimum, 1" long by 1" by 24", stakes are to be used to secure the log to the ground surface. Installation in rocky, sandy or other loose soil may require longer stakes.

Slope Installation

Place RECP along slope to provide upstream apron for log. Secure RECP according to standard slope installation instructions including upstream anchor trench. Secure log to blanket, ensuring log remains in intimate contact with the RECP over the length of the installation. A minimum of one foot upstream apron and two foot downstream apron are required for installation. Subsequent, downslope rows of logs should be spaced appropriately for site conditions to minimize acceleration of flow. Further, log seams are to be offset to ensure continuous filtration. Figure A presents a schematic of a slope installation in profile view.

Channel Installation

Place RECP along channel to provide upstream and downstream apron for log identically to slope installation. Secure log to blanket, ensuring log remains in intimate contact with the RECP over the length of the installation. A minimum of one foot upstream apron and two foot downstream apron are required for installation. Subsequent, downslope rows of logs should be spaced appropriately for site conditions to minimize acceleration of flow. Further, log seams are to be offset to ensure continuous filtration. Figure A / Figure C presents a schematic of a channel installation.

Drain Filter Installation

Surround drain inlet to be protected with log, ensuring seams are overlapping to minimize flow circumventing log. Secure logs to ground surface ensuring the log remains in intimate contact with the ground surface over the entire installation. Provide RECP apron secured to the ground surface between drain and log.

Document # WE_EXCEL_LOG_II. Please contact Western Excelsior technical Support Division at 800-967-4009 with specific questions or for further information.

Slope/Channel Installation

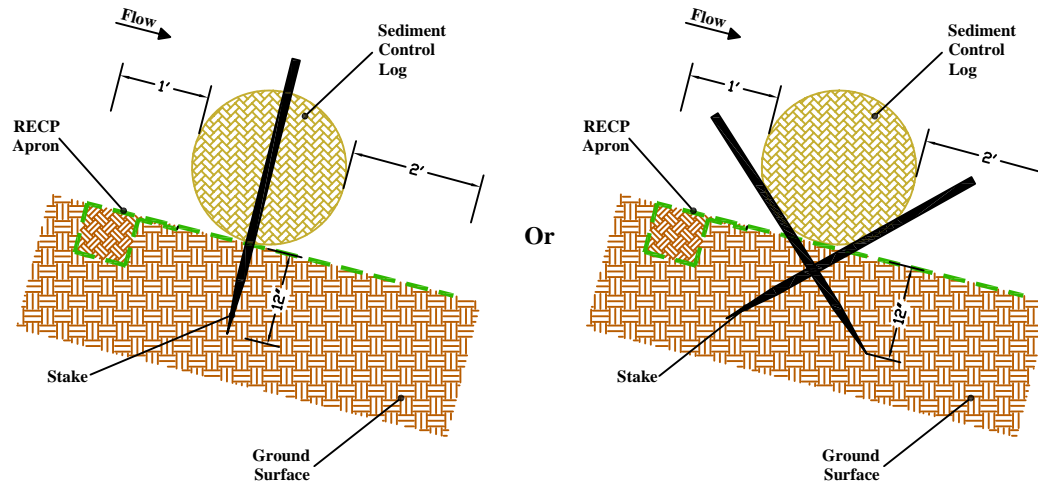


Figure A - Profile View

Flat Ground (Perimeter Guard) Installation

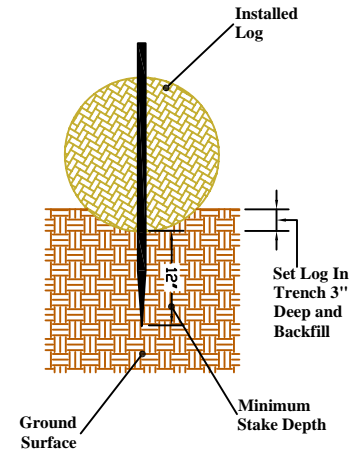
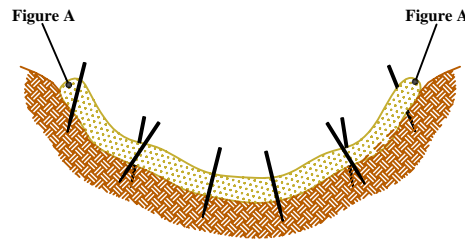


Figure B - Profile View

Channel Installation



Minimum stake
in ground, 12"

Do not allow flow to overtop installation.

Figure C - Cross-Section View

Drain Filter

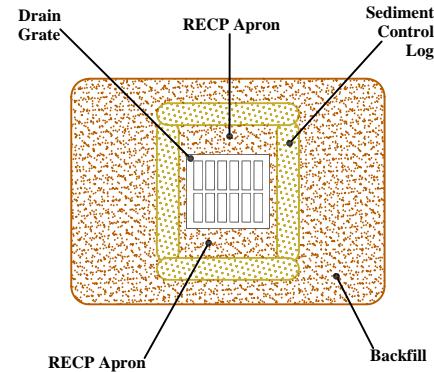


Figure D - Cross-Section View

Curbside Installation

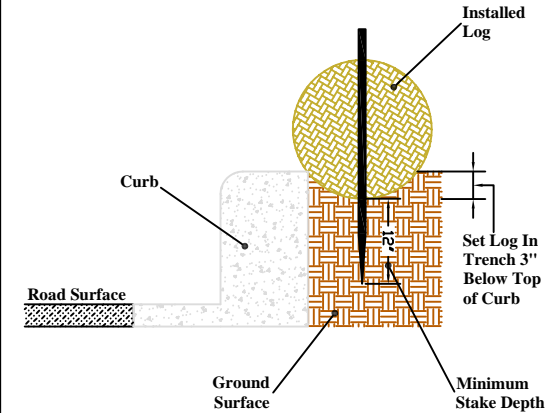


Figure E - Cross-Section View