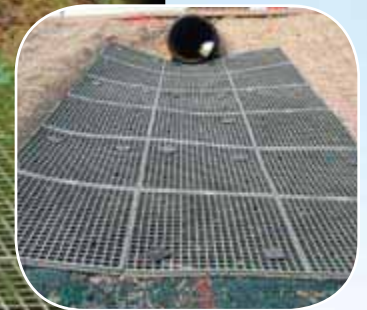
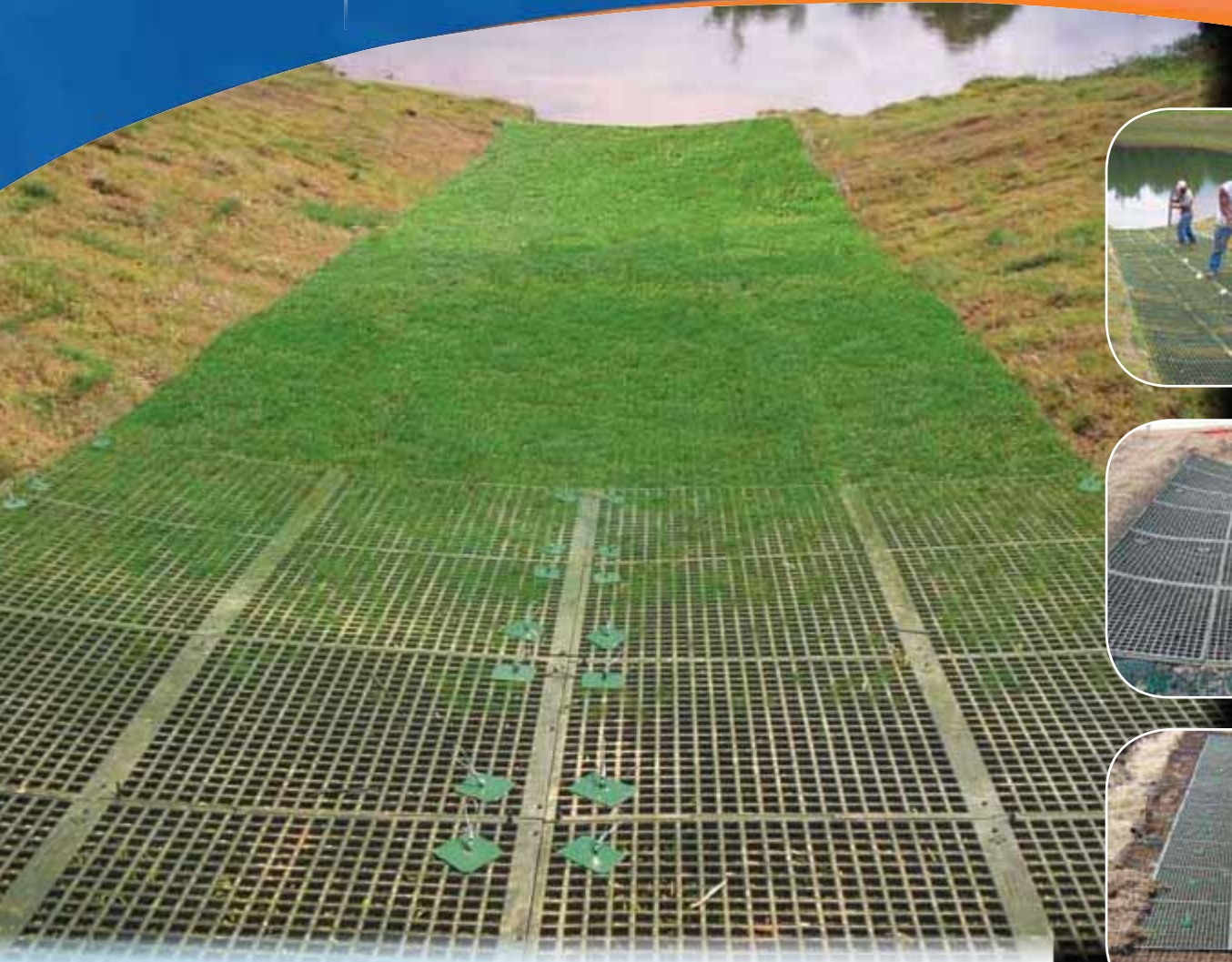




GEORUNNER®

FLOW PROTECTION MATS



protect soil from the effects of water flow

GEORUNNER® FLOW PROTECTION MATS are an economical solution for protecting soils from scour in erosive environments. GEORUNNER® mats protect soils from erosion and vegetation loss in areas with intermittent or concentrated flows, and when embankments are exposed to fluctuating water levels. They offer resistance to shear stresses, and protect more efficiently than typical vegetation or rip rap systems.

GEORUNNER® mats are stabilized with a strong anchor system designed to resist pullout caused by high-flow lifting forces, even in saturated soils. The mat's open mesh design allows vegetation to grow through the openings, and with full vegetation, blend in naturally with the environment. Fully anchored units can be driven on by mowing or other lawn maintenance equipment.

SHEET FLOW & POINT FLOW APPLICATIONS

- Stormwater Channels & Containment Ponds
- Swales & Drainage Ditches
- Culvert Outfall Protection
- Shoreline Protection
- Parking Lot Runoff Areas
- Spillways/DownChutes/ Drop Structures

GEORUNNER® SPECIFICATION

MATERIAL: Polypropylene

COLOR: Green

DIMENSIONS: 2 ft x 4 ft x 0.5 in
(0.6 m x 1.2 m x 1.3 cm)

AREA: 8 ft² (0.74 m²)

WEIGHT: 8 lbs (3.6 kg)

OPEN AREA: 45%

MESH OPENING: 0.8 in x 0.88 in
(20 mm x 20 mm)

MESH RIB WIDTH: 0.25 in (6 mm)
4-sided tabular connection

HIGH-STRENGTH

ANCHORS: Integrated at design intervals

TENSILE STRENGTH: 3,500 lbs (1,580 kg) min.

*protecting soils
from erosive forces*

GEORUNNER®

SURFACE PROTECTION MATS



protect soil from the effects of traffic

GEORUNNER® SURFACE PROTECTION MATS reduce soil compaction and turf damage caused by concentrated light-to-medium loads from vehicles and foot traffic. While excellent for temporary use, the mats can also be used for permanent, light-weight applications.

Benefits include reducing mud tracking from construction site entrances, bridging over sandy areas for light-weight access of vehicles, wheel chairs or foot traffic. The mat's open mesh design allows sunlight and water to permeate, maintaining healthy turf. The mats are light-weight, easily transported between jobs and only require minimal storage space. They're easily cleaned for multiple uses and do not absorb water and soil like plywood.

SOIL & TURF PROTECTION APPLICATIONS

- Construction vehicle and equipment access over grass
- Light-weight trail-hardening system over sand or soils
- Barrier free access across sandy areas and around playground equipment
- Deck/patio protection from construction site debris
- Storage surface for small trailers and boats
- Garage/basement floor liner



*creating
sustainable
environments®*



DISTRIBUTED BY:

PRESTO GEOSYSTEMS

P.O. Box 2399
670 North Perkins Street
Appleton, Wisconsin 54912-2399, USA

P: 920-738-1328

TF: 800-548-3424

F: 920-738-1222

E: info@prestogeo.com

www.prestogeo.com

Geosystems®, Georunner® and Creating sustainable environments® are registered trademarks of Presto Products Co. This information has been prepared for the benefit of customers interested in the Georunner® system. It was reviewed carefully prior to publication. Presto assumes no liability for its accuracy or completeness. Final determination of the suitability of any information or material for the use contemplated, or for its manner of use, is the sole responsibility of the user.

GR/01 JAN 2010
Printed in the U.S.A. 2010
© 2010 Presto Geosystems
AP-6083