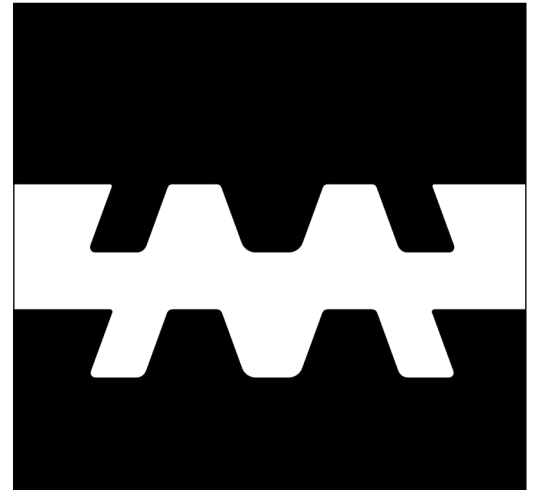


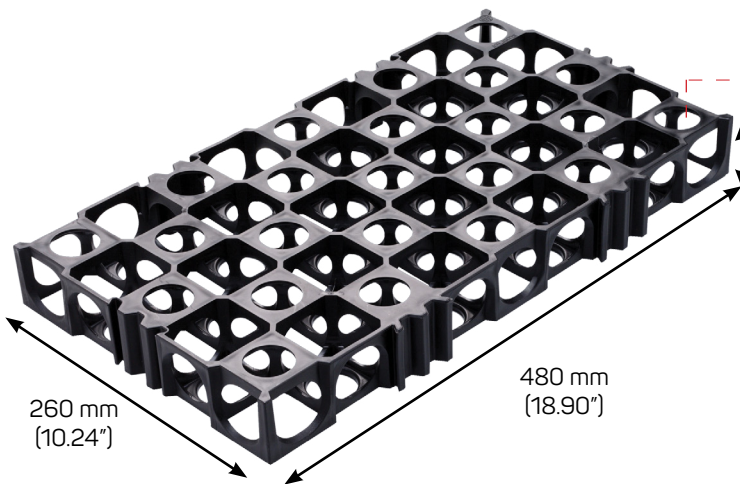
PRODUCT SPECIFICATION

Atlantis[®] 52 mm Flo-Cell[®]

Part Number	80052	
Size Metric	(H) 52mm x (W) 260mm x (L) 480mm	
Size Imperial	(H) 2.04" x (W) 10.24" x (L) 18.90"	
Part Weight	750 grams	
Weight / m ²	6.00 kg/m ² (1.23 lb/1 ft ²)	
Flow Rate	2.65 L/sec/m @ 1% gradient	
Pieces per m ² (10.76ft ²)	8	
Ultimate Resistance	155 tonnes/m ²	
Material	85% Recycled Polypropylene, 15% Atlantis proprietary selected materials	
Colour	Black	
Void Ratio	Volume: 90 %	Surface: 70 %
Biological Resistance	Not affected by biological activity.	



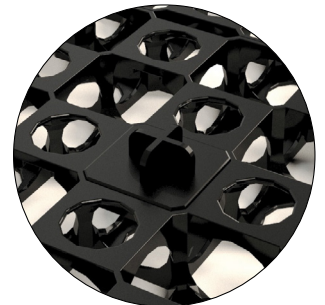
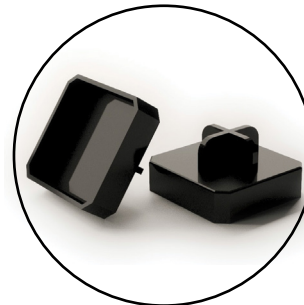
Connecting Clips



Notched cavities for shear pin fitting

52 mm
(2.04")

Atlantis[®] Shear Pin for lateral restraint



Note: Production specifications are updated on a regular basis. Please contact Atlantis for the latest product specification data sheet.