

GEOTEX NONWOVENS

GEOTEX® Nonwoven geotextiles are made from high-quality polypropylene staple fibers that are needle-punched to form a dimensionally stable fiber network that can withstand construction and installation stresses. These versatile geotextiles are the best choice for most transportation infrastructure applications.

PRIMARY FUNCTIONS

- Separation/stabilization
- Filtration and drainage
- Cushion/protection
- Demarcation

APPLICATIONS

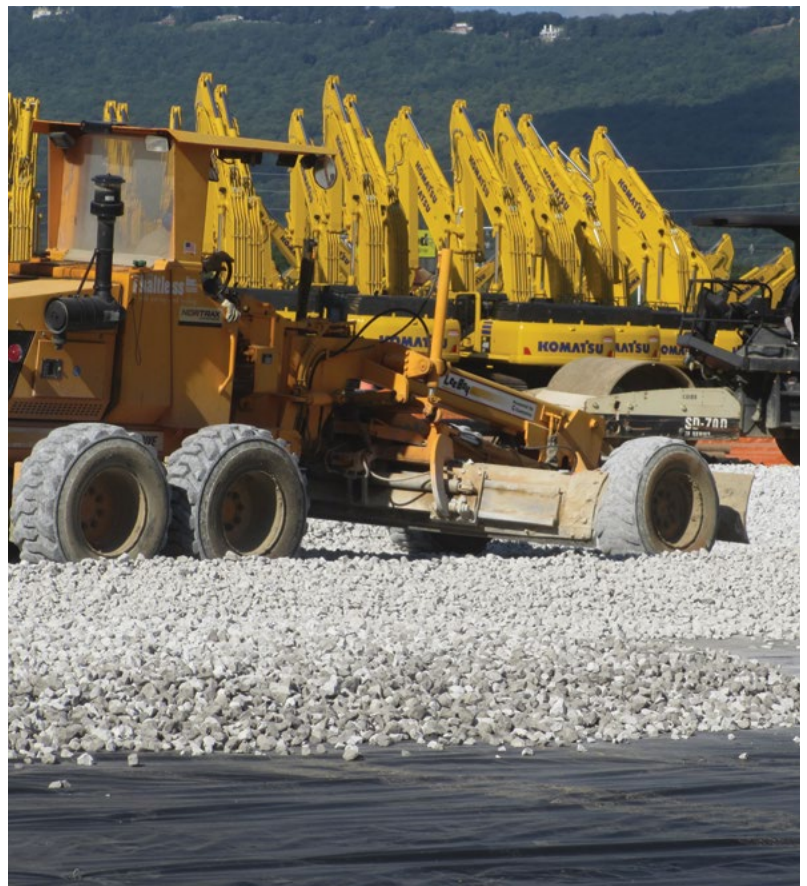
- Paved and unpaved roads
- French drains and edge drains
- Landfills
- Hard armor underlayment
- Containment ponds
- Tunnel linings
- Railroad beds
- Parking lots

FEATURED BENEFITS

- Saves aggregate, reducing project cost and carbon footprint
- Doubles the service life of the road
- Offers the highest water flow rate and lateral transmissivity to reduce pore water pressure under traffic loading
- Features high lateral transmissivity to prevent pore pressure from building-up under truck traffic loading
- High interface friction to restrain and strengthen aggregate layers
- Engineered with optimal elongation to avoid puncture and tearing during installation



GEOTEX® DND Orange is a bright orange, nonwoven geotextile that signals excavators to stop digging. It also features a bilingual warning message printed directly on the fabric.



GEOTEX WOVENS

GEOTEX Woven geotextiles are manufactured with high tensile strength and low elongation to provide dimensional stability and load distribution, reducing rutting and extending the life of roadways.

PRIMARY FUNCTIONS

- Soil reinforcement
- Separation/stabilization
- Filtration (monofilament styles only)

APPLICATIONS

- Paved roads
- Embankment stabilization
- Hard armor underlayment
- Roadway construction over soft soils
- Silt fence

FEATURED BENEFITS

- Increased service life of the road
- Requires less aggregate during construction, reducing carbon footprint and project cost
- Provides added construction stability over very soft soils (CBR < 1)
- High modulus enhances mechanically stabilized earth walls and slopes

