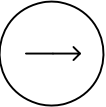


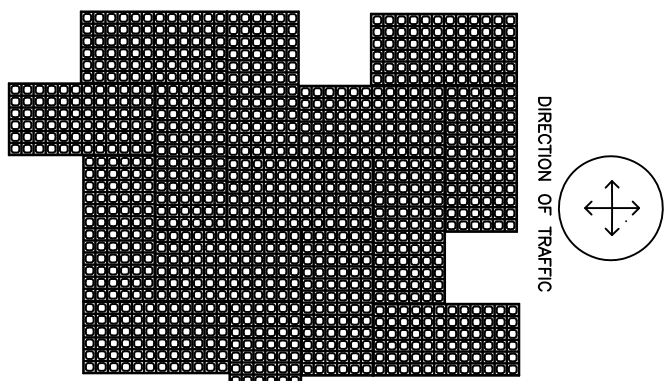
PREFERRED LAYOUT – BRICKLAYER PATTERN

CUT GEOTERRA UNITS IN HALF ALONG OUTER EDGE OF SYSTEM OR CONNECT ADDITIONAL UNITS

DIRECTION OF TRAFFIC



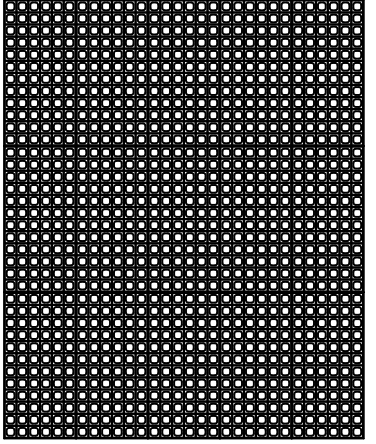
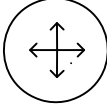
GEOTERRA MATERIAL SPECIFICATION	
MATERIAL	UP TO 97% RECYCLED POLYETHYLENE
COLOR	RANGES DARK SHADES GRAY TO BLACK
CHEMICAL RESISTANCE	SUPERIOR
CARBON BLACK FOR UV STABILIZATION, %	1.5 TO 2.0%
UNIT MIN CRUSH STRENGTH – EMPTY @ 70F (21C)	420 PSI (2,900 KPa)
UNIT MIN CRUSH STRENGTH – SAND FILLED @ 70F (21C)	7,058 PSI (48,734 KPa)
FLEXURAL MODULUS @ 73F (21C)	35,000 PSI (240,000 KPa)
NOMINAL DIMENSIONS – WIDTH X LENGTH	20 X 40 IN (0.5 X 1.0 M)
NOMINAL UNIT DEPTH	2 IN (50 MM)
NOMINAL AREA	4.95 SQFT (0.46 SQMTR)
CELLS PER UNIT	72
CELL SIZE	3.1 X 3.2 IN (79 X 81 MM)
TOP OPEN AREA PER UNIT	87%
BOTTOM OPEN AREA PER UNIT	41%
INTERLOCKING OFFSET SHEAR TRANSFER PINS	12 TABS PER 40 IN (PER 1 M)
NOMINAL WEIGHT PER UNIT	9.5 LBS (4.5 KG)
UNITS PER PALLET	50



PREFERRED LAYOUT – HERRINGBONE PATTERN

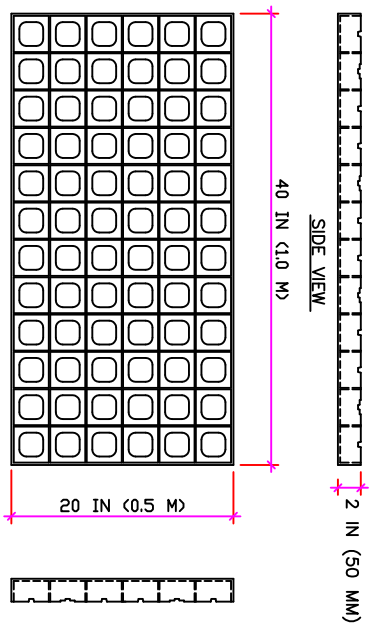
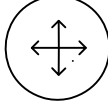
CUT GEOTERRA UNITS IN HALF ALONG OUTER EDGE OF SYSTEM OR CONNECT ADDITIONAL UNITS

DIRECTION OF TRAFFIC



SIDE-TO-SIDE/TEMPORARY LAYOUT

DIRECTION OF TRAFFIC



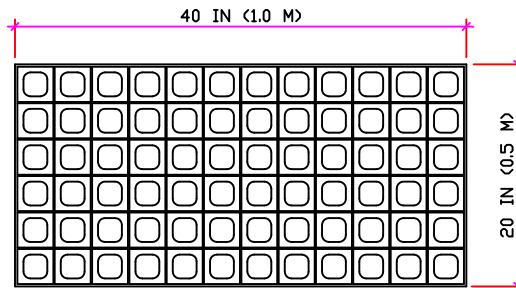
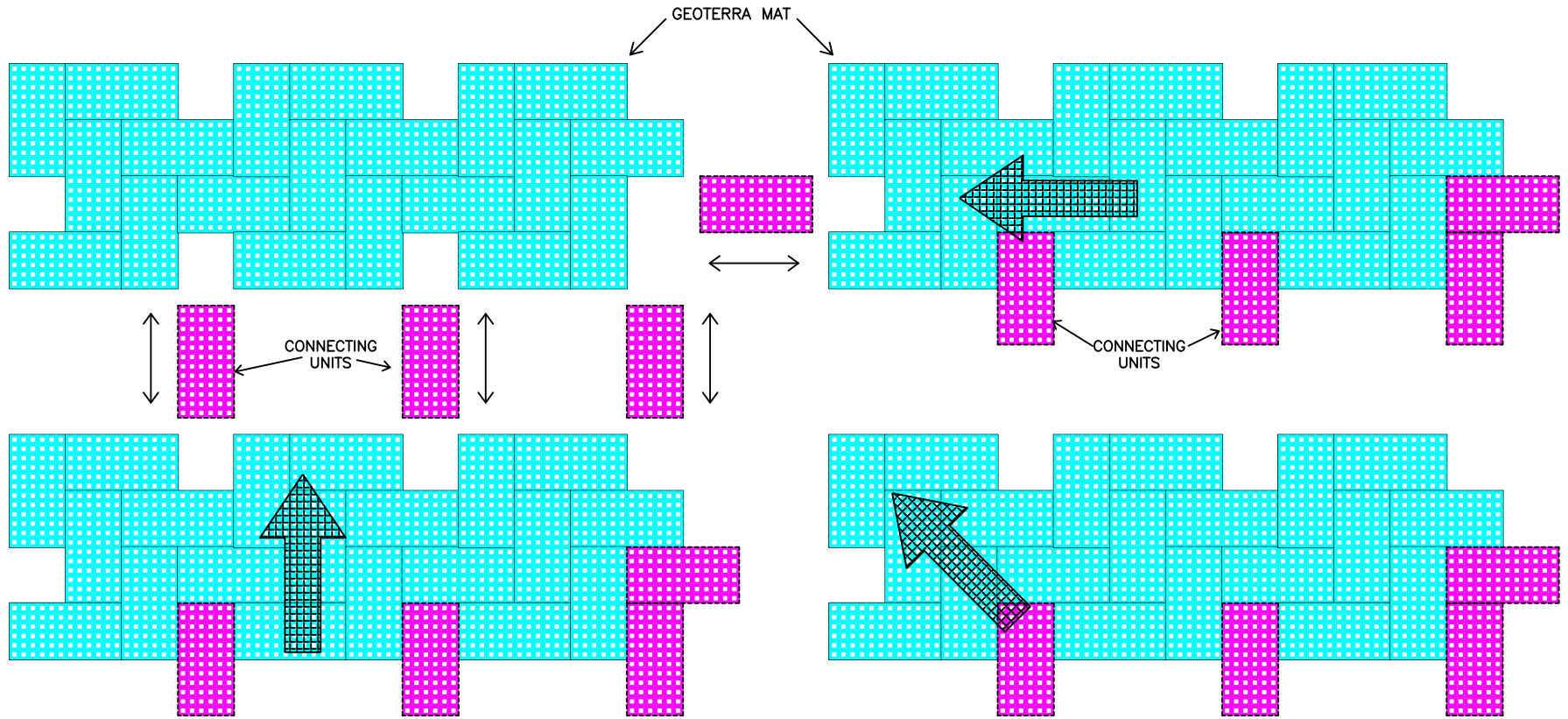
PRESTO® PRODUCTS CO.
 670 NORTH PERKINS STREET
 APPLETON, WI 54914
 920-738-1342
 WWW.PRESTOCEO.COM




GEOTERRA
STRUCTURAL MAT SYSTEM

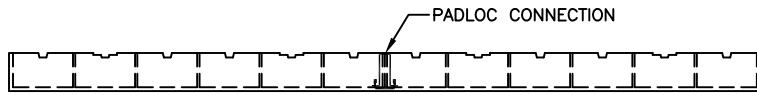
PRESTO, GEOSYSTEMS®, GEOTERRA®, AND PADOCC® ARE REGISTERED TRADEMARKS OF PRESTO PRODUCTS.

DATE:	MARCH 2015	FILE NAME:	GEOTERRA-11.DWG
SCALE:	NTS	SHEET:	1

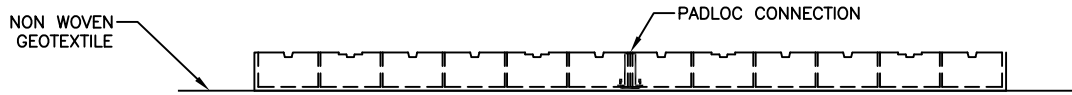


GEOTERRA UNIT
5.3 SQFT (0.50 SQMTR)

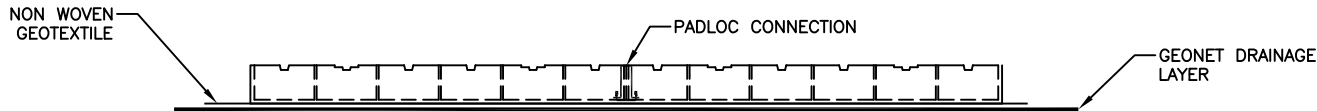
	PRESTO® PRODUCTS CO. 670 NORTH PERKINS STREET APPLETON, WI 54914 920-738-1342 WWW.PRESTOCEO.COM		
	GEOTERRA STRUCTURAL MAT SYSTEM PRE ASSEMBLED MATS <small>PRESTO, GEOSYSTEMS®, GEOTERRA® AND PADLOC® ARE REGISTERED TRADEMARKS OF PRESTO PRODUCTS.</small>		
DATE:	NOVEMBER 2013	FILE NAME	GEOTERRA-D1.DWG
SCALE:	NTS	SHEET	1



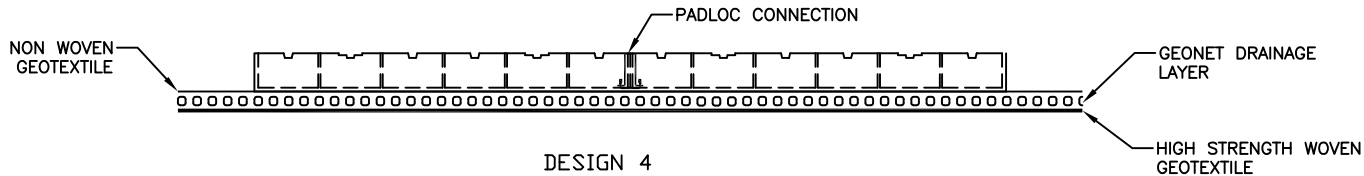
DESIGN 1



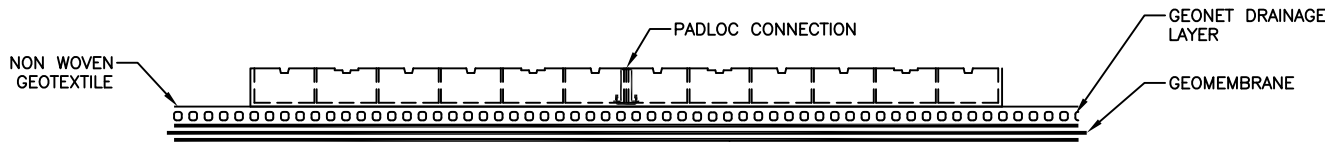
DESIGN 2



DESIGN 3



DESIGN 4



DESIGN 5

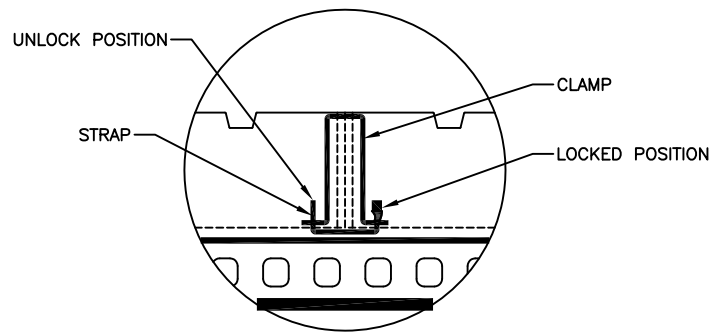
TYPICAL APPLICATIONS	
DESIGN	USES
1 AND 2	PREVENTS RUTTING, PROTECTS TURF, USE OVER SAND, CREATE UNIFORM/STABLE SURFACE
3	LOAD SUPPORT OVER POOR/WET SOILS, PREVENT RUTTING, PREVENT SUB GRADE DEGRADATION/CONTAMINATION, CREATE UNIFORM/STABLE SURFACE
4	LOAD SUPPORT OVER POOR/WET SOILS, PREVENT RUTTING, CREATE UNIFORM/STABLE SURFACE, CREATES INTEGRATED DRAINABLE SURFACE
5	LOAD SUPPORT OVER POOR/WET SOILS, PREVENT RUTTING, CREATE UNIFORM/STABLE SURFACE, CREATES INTEGRATED DRAINABLE SURFACE

PRESTO® PRODUCTS CO.
 670 NORTH PERKINS STREET
 APPLETON, WI 54914
 920-738-1342
 WWW.PRESTOGEO.COM

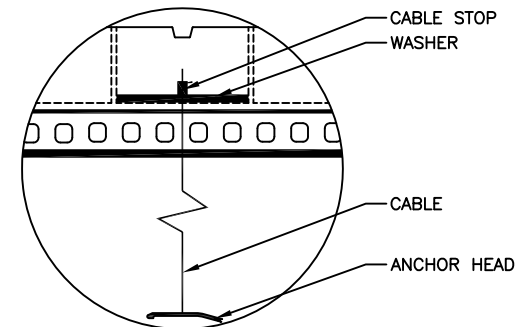
GEOTERRA
 STRUCTURAL MAT SYSTEM

PRESTO, GEOSYSTEMS®, GEOTERRA® AND PADLOC® ARE REGISTERED TRADEMARKS OF PRESTO PRODUCTS.

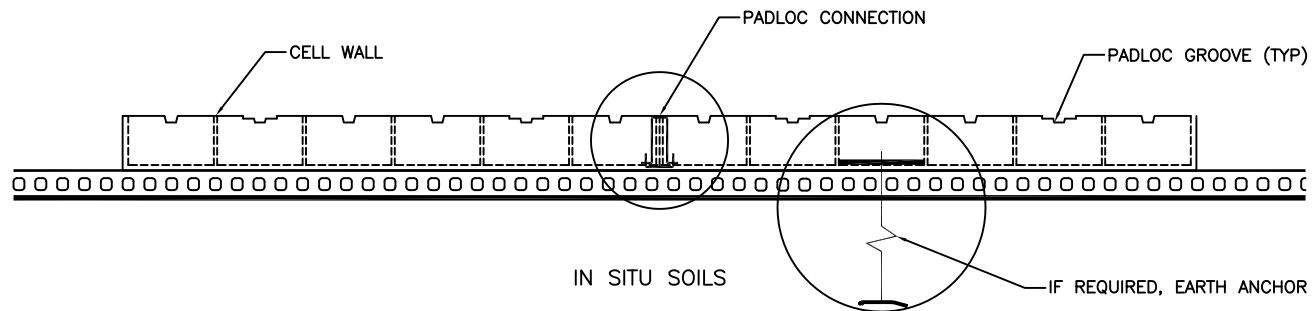
DATE:	NOVEMBER 2013	FILE NAME	GEOTERRA-C1.DWG
SCALE:	NTS	SHEET	1




PADLOC CONNECTION DETAIL (6/UNIT)



EARTH ANCHOR DETAIL



GEOTERRA COMPONENTS

	PRESTO® PRODUCTS CO. 670 NORTH PERKINS STREET APPLETON, WI 54914 920-738-1342 WWW.PRESTOGEO.COM	
	GEOTERRA STRUCTURAL MAT SYSTEM <small>PRESTO, GEOSYSTEMS®, GEOTERRA® AND PADLOC® ARE REGISTERED TRADEMARKS OF PRESTO PRODUCTS.</small>	
DATE:	NOVEMBER 2013	FILE NAME: GEOTERRA-B1.DWG
SCALE:	NTS	SHEET 1