

Easy. Effective. Long term repairs.

Pavement Repair: Saw Cutting

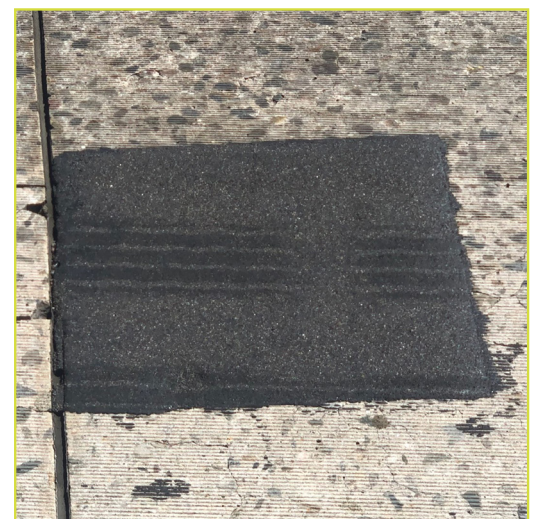
Saw cutting is a pavement repair practice used for utility cuts, road widening, or other repairs on asphalt and concrete. Most saw cuts are filled with cold patch or hot mix asphalt. The vertical saw cut leaves behind a smooth surface that can inhibit bonding of the existing pavement to the patch material. Concrete and asphalt typically do not bond well together, leaving space for water intrusion and shortening the life of the repair. This process can be expensive and time consuming for smaller repairs.

Using American Road Patch™ on saw cut repairs saves time and money. Simply cut American Road Patch to size, ensuring the patch extends beyond the cuts by a minimum of 4" (10 cm) on all sides. Install the patch according to the instructions. American Road Patch™ will bond with the surface, sealing the repair from water and debris, while also securing the fill material. Using American Road Patch™ ensures a long term, water tight repair.



Saw cut in concrete on highway. Edges continue to degrade.

STOP THE REPAIR CYCLE



American Road Patch™ over 3 years in service and going strong.



SAINT-GOBAIN

**SAINT-GOBAIN ADFORS
America, Inc.**

1795 Baseline Road
Grand Island, NY 14072 - USA
Phone: 800-762-6694
Fax: 716-775-3902
www.adfors.com

