



# DURAWATTLE®

BY HEAVYWEIGHT SEDIMENT CONTROL SOLUTIONS

**An innovative sediment retention device  
that replaces straw wattle and silt fence**

Durable • Reusable • Versatile • Made to be driven over



# VERSATILE

DuraWattle can be installed across multiple surfaces:

On top of a curb



Soil



Hard surfaces



DuraWattle has been used in these applications:

Perimeter control



Site access points



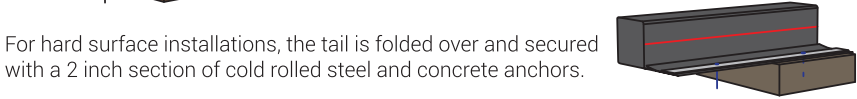
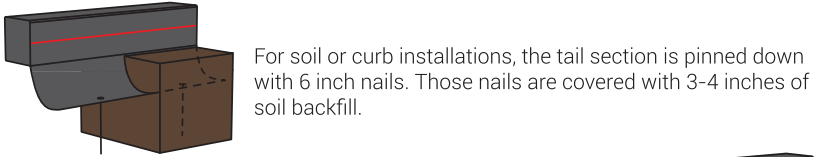
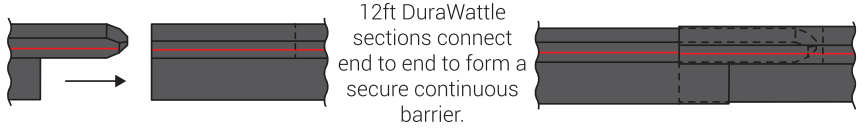
Stockpile management



Drain inlet protection



# INSTALLS EASY

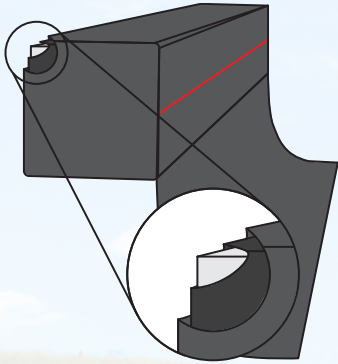


1800 Ft. of DuraWattle VS 1800 Ft. of Straw Wattle



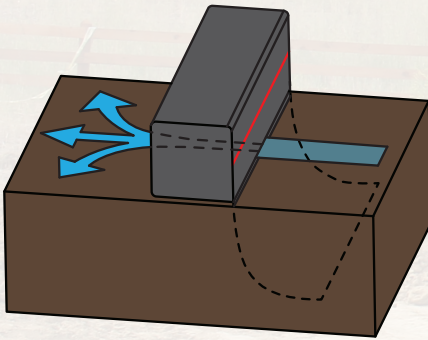
# EFFECTIVE

## What is DuraWattle made of?



DuraWattle is a synthetic wattle or berm comprised of an outer layer of monofilament filter fabric and a plastic sealed inner foam core. The core is made from flexible polyurethane sealed in polyethylene film. The fabric and foam are extremely flexible and can bend to fit the contour of almost any work area. All materials are made 100% in the USA for trusted quality.

## DuraWattle filters and flows sediment laden water



The outer layer of monofilament fabric filters the sediment laden water as it passes through the base of the wattle above the "tail section". The estimated clean water flow-through rate is 100gpm/ft<sup>2</sup>. DuraWattle is designed to dewater and retain sediment while dissipating concentrated flow into more manageable sheet flow.

Tested at (ASTM D7351):

**96.6%** sediment retention

**58%** turbidity reduction

# DURABLE

Drive over it!



DuraWattle is **made to be driven over** by heavy equipment without any change to its overall effectiveness. Unlike traditional wattles, the inner core of DuraWattle is non-permeable and does not take on water. The plastic sealed foam core gives the barrier its height and helps maintain its shape after being driven over by heavy traffic.



# LONG-LASTING

New home moratorium site in Sacramento



8 year old DuraWattle



Customers report that **70-90%** of DuraWattle can be reused after a job

# REUSABLE

# OTHER BMP COMPARISONS

	DuraWattle®	Silt Fence	Straw Wattle
<b>Sediment Retention Rate</b>	96.6%	60-90% (lower if prefab silt fence)	47-60%
<b>How it Filters</b>	The outer layer of fabric filters the sediment laden water as it passes through the base of the wattle above the "tail section". It does not filter hydrocarbons or dissolved metals.	The fabric ponds sediment laden water causing sediment to be retained as it settles. It does not typically filter hydrocarbons or dissolved metals.	Fiber rolls slow the velocity of sheet flow run off, filtering sediment laden water and ponding excess runoff allowing the sediment to settle. In most cases, fiber rolls do absorb hydrocarbons.
<b>Effectiveness on Hard Surfaces</b>	DuraWattle is designed to be secured to hard surfaces without a change in filtering surface area.	Silt fence cannot be installed on hard surfaces without trenching of some kind.	Without being trenched or properly weighted, there is not enough contact with the ground to filter sediment laden water effectively.
<b>Typical Longevity</b>	3-5 years	3-8 months	6 months - 2 years
<b>Reusability</b>	Approx 70-90% of DuraWattle can be removed and reused at different jobsites.	The filter fabric and damaged wooden posts are often transported to a landfill while the steel posts (and wirebacking) may be reused.	After fiber rolls have reached their sediment retention capacity, they cannot be reused with the same effectiveness.
<b>Weight</b>	5lb per 12ft section	41-52lb per 100ft (without stakes)	60lb per 25ft section

See full comparison at [durawattle.com](http://durawattle.com)

MADE 100% IN THE USA BY  
**-|||HEAVYWEIGHT-|||**  
**SEDIMENT CONTROL SOLUTIONS**

**REQUEST A FREE SAMPLE**

DuraWattle.com  
contact@durawattle.com  
(916) 822-2174