



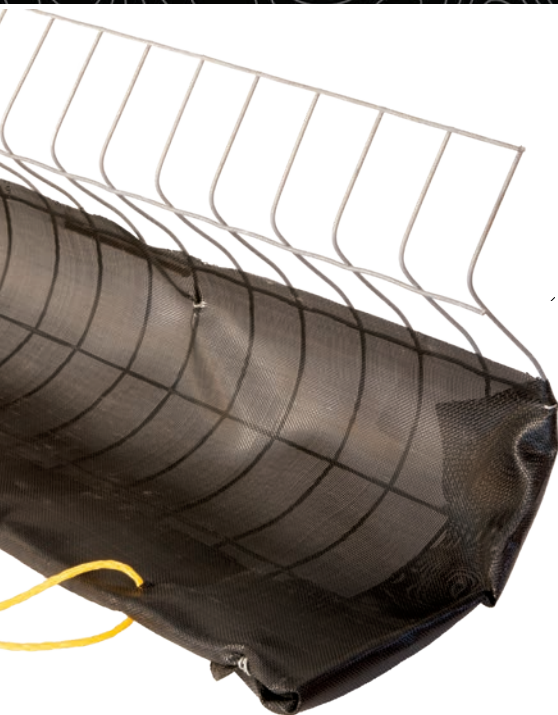
GEOCURVE

STORMWATER CURB INLET FILTER

RECESSED & REUSABLE CURB INLET FILTER

INNOVATION MEETS INLET PROTECTION

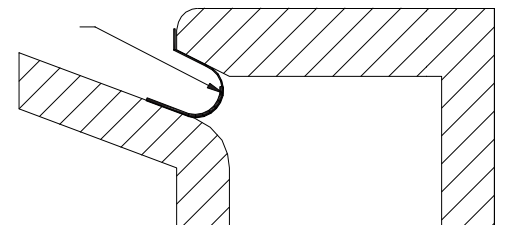
- Compresses to fit snugly into the curb inlet with no protrusion into the curb line or street
- No pedestrian or vehicle hazard, and no need for extra connection elements (sand bags, erosion control logs, etc)
- Effective filtering of stormwater, while capturing all debris from large pollutants to fine sediments and silts
- The high flow filter and overflow feature encourages stormwater flow into inlet
- Does not diminish the effectiveness of the curb inlet
- Does not force water into the street or cause street flooding
- Easy to install – simply push into place with garden rake.
- Does not force water into the street or cause street flooding
- Easy to maintain – simply remove, discard collected pollutants, and reinstall
- Easy to remove- pull handles at the bottom of the GeoCurve and pull it out



COMPRESSION FIT TECHNOLOGY

The GeoCurve has served the stormwater industry as an innovative approach to maintaining compliance through a cost effective, high performance, and easy to handle product.

The GeoCurve snaps into the mouth of the curb inlet, allowing the product to properly function while remaining recessed within the inlet. The GeoCurve is essentially invisible to the untrained eye, making it an ideal solution for inlet protection on urban sites. Stormwater is encouraged to enter the mouth of the inlet, while all of the captured debris/sediment rests out of harms way, hidden from oncoming traffic and pedestrians.





MORE BENEFITS & FEATURES

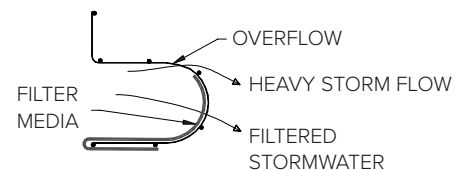
- The GeoCurve has been hydraulically tested to provide superior performance
- The GeoCurve is installed as a standard BMP throughout the United States, and it is available through local distributors in your area
- The shape of the GeoCurve allows nesting of the product on top of itself for easy storage and transportation in an effort to cut down on freight expenses
- The GeoCurve is available in multiple diameters and lengths with an option to customize and modify the size
- If properly installed and maintained, the GeoCurve can be reused on multiple sites
- Provides effective stormwater compliance, while maintaining the aesthetic of protected property
- Sediment and trash are contained in the device allowing easy maintenance and disposal of pollutants. Improved filtration can be accomplished by adding various filter elements

The GeoCurve Inlet Filter is an innovative device created by GeoSolutions, Inc. to comply with the EPA's general stormwater requirements and best management practices

National organizations such as the EPA and NPDES issue stormwater treatment requirements in an effort to protect the cleanliness of our environment. The effectiveness of the GeoCurve aligns with NPDES' need for filtering out pollutants and/or preventing pollution by controlling it at its source. Many of the current conventional solutions are not providing the required degree of treatment. Now is the time for the GeoCurve to be utilized as a tool to help restore compliance and further protect the future of our environment.

More often than not, stormwater inlets drain to creeks and tributaries that are connected to rivers, which ultimately drain into the planet's oceans. The degree of pollution experienced in our waterways and ocean is directly attributed to the amount of stormwater that we are allowing to be untreated. We should be responsible stewards of our environment. Successful stormwater treatment is now achievable with the GeoCurve.

GeoCURVE Inlet Filter cross-section



GEOSOLUTIONS INC.

13812 Aston Street
Houston, Texas 77040

512-786-0055
www.geocurve.net