



GEOCURVE

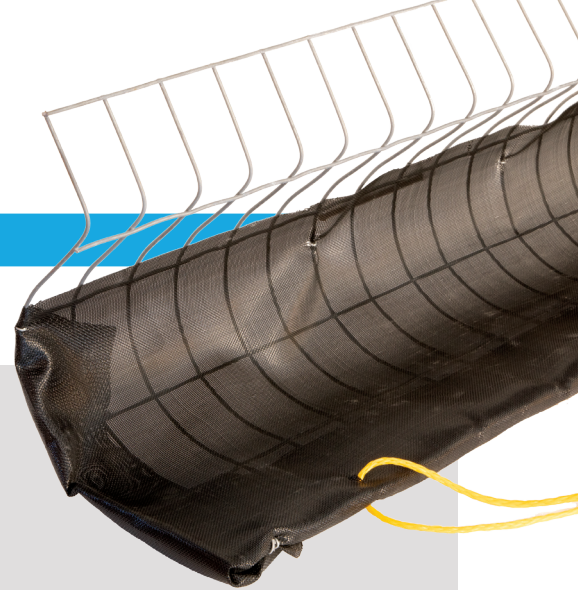
STORMWATER CURB INLET FILTER

INSTALLATION

The GeoCurve is easily installed into a curb inlet in a few minutes!

The following tools may be required to manipulate the GeoCurve on site, to fit nontraditional inlet widths:

- Wire Cutters
- Staple/Hog Ring Gun with fasteners
- Scissors
- Garden Rake or Push Broom



STEP 1

Lay the GeoCurve in front of the curb inlet opening to determine if the length of the filter needs to be adjusted to fit into the inlet.



STEP 2

Adjust the length of the device as required by first clipping along the outside of the vertical wire rung in a straight line.

Note: clipping inside the vertical wire rung results in weakening the strength of the wire mesh, as well as causes a safety hazard from the protruding horizontal wire rungs.



STEP 3

If necessary, use your scissors to cut the extra fabric to a manageable length, so that it sticks out 6"-8" past the outside vertical rung of the wire mesh.



STEP 4

Fold the extra fabric behind the device by creasing the fold a few inches from the wire mesh to portray a fabric “wing” off the side of the GeoCurve. Staple the fabric to the wire mesh on the backside of the GeoCurve. These “wings” will help seal the gap between the GeoCurve and the side walls of the precast curb inlet, to prevent any debris from sneaking past the GeoCurve’s filter fabric.



STEP 5

Place the GeoCurve in the throat of the inlet and progressively force the device into the throat of the inlet starting from one end and moving toward the opposite end. The device should be forced into the inlet with a device to spread the pushing force over a min. 12 inch length. This can be accomplished with a garden rake or a push broom. The device is properly installed when the upper retention flange is tight against the top of the inlet and the body of the device is fully within the inlet throat and straight along the front lower edge.



MAINTENANCE

The device is designed to capture sediment and debris within the throat of the device. The City of Austin criteria requires removal of the accumulated silt when it reaches a depth of 2 inches or 1/3 of the inlet height. Collected sediment & debris can be removed in one of two ways.

1. Accumulated trash can be hand-picked from the device. Accumulated silt can be removed using a shovel or vacuum truck.
2. The device can be removed per the following removal instructions. As the device is removed from the inlet, the collected material is retained in the “C” shaped trough of the device. The collected debris and sediment can be disposed of by turning the device upside down in a designated area. Upon cleaning the device, it can be replaced into the inlet for additional service.



REMOVAL

The GeoCurve is easily removed from the curb inlet by progressively pulling out the device from the throat of the inlet, starting from one end and moving toward the opposite end. The device is to be pulled from the bottom lip of the device by using the yellow rope handles or by grabbing the bottom lip of the device and rotating the unit counterclockwise from the curb inlet mouth. As the GeoCurve Inlet Filter is pulled out from the inlet from the bottom lip, the inlet filter is now laying on its’ back so that the device resembles a “U” shape. The collected sediment and debris are now contained in the “U” shaped trough ready for disposal in a designated location.

