



FABRIC-FORMED CONCRETE MATTRESSES

## GENERAL PRODUCT APPLICATIONS





# THE HYDROTEX® LINE OF PERMANENT EROSION CONTROL PRODUCTS



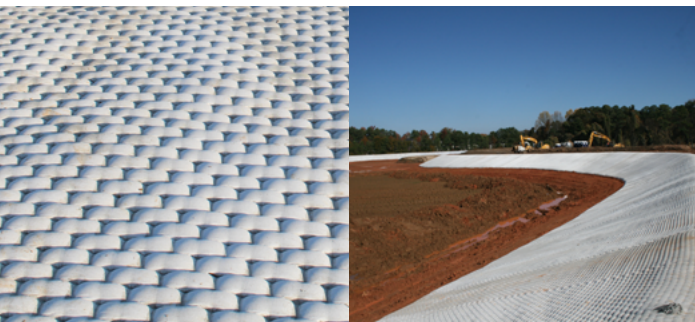
## FILTER POINT

A concrete mattress that consists of a double-layer woven fabric joined together by spaced, interwoven filter points.



## ARTICULATING BLOCK

A concrete mattress that consists of a series of blocks linked by an interwoven perimeter of fabric and internal revetment cables.



## UNIFORM SECTION

A concrete mattress with a relatively uniform (constant) cross section thickness and a brick pattern surface.



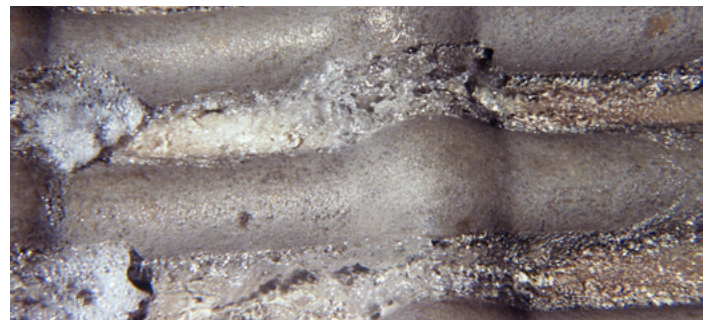
## ENVIROMAT®

A concrete mattress that consists of concrete-filled elements and unfilled areas that allow vegetation.



## ENVIROMAT® FX

A concrete mattress with unwoven filtration/vegetation perimeters around each block.



## FILTER BAND

A concrete mattress that consists of a double-layer woven fabric joined together by spaced, interwoven filter bands,



# HYDROTEX®: CAST-IN-PLACE INSTALLATION PROCESS



Some products can be pre-cast and hoisted in place.



## APPLICATION: BRIDGE PIER PROTECTION



Sam Houston Tollway over shipping channel

### **HYDROTEX® 8" ARTICULATING BLOCK (AB800)**

Installation was pumped in place above and below water



## UNDERWATER OIL PIPELINE PROTECTION



Trinidad

### HYDROTEX® 12" ARTICULATING BLOCK (AB1200)

Installation was locally pumped then lifted into place

## BRIDGE ABUTMENT PROTECTION



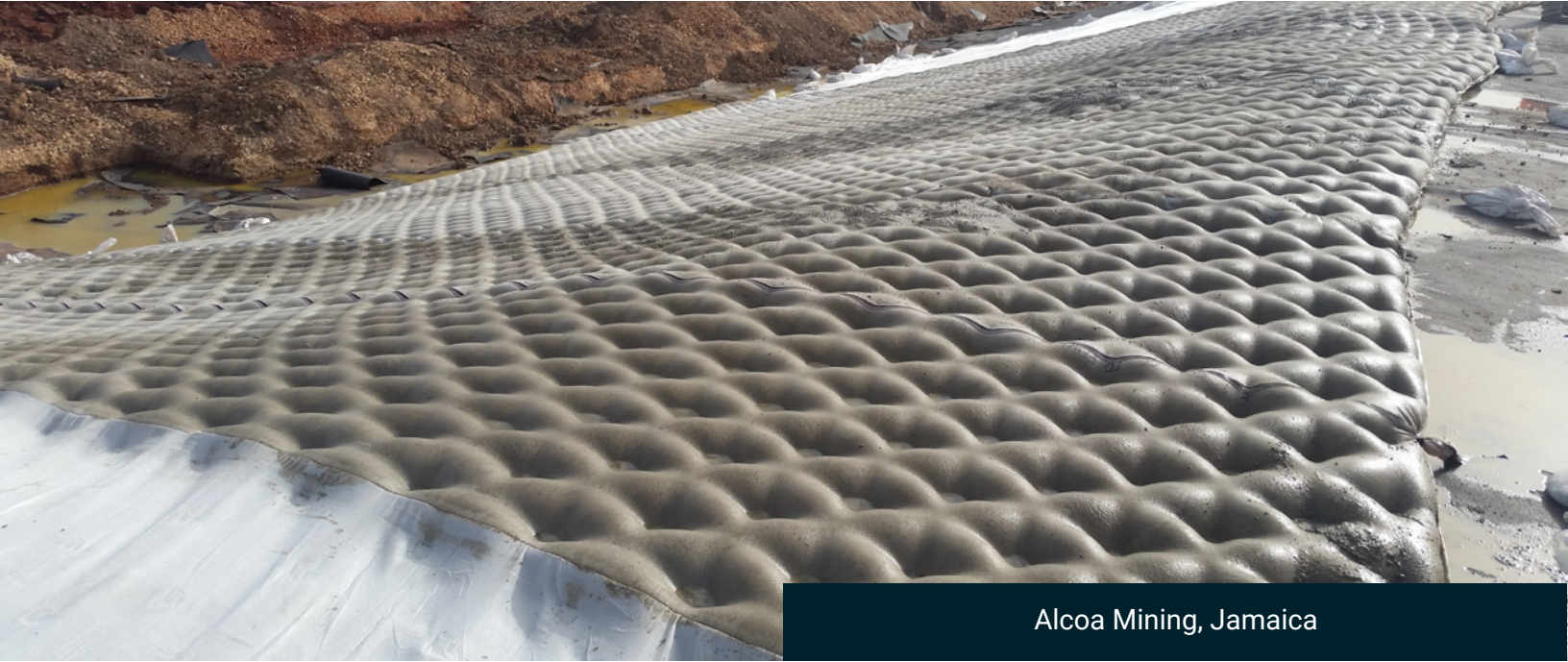
Florida Department of Transportation

### HYDROTEX® 4" ARTICULATING BLOCK (AB400)

Installation was locally pumped then lifted into place



## IMPOUNDMENT SLOPE AND LINER PROTECTION



Alcoa Mining, Jamaica

### **HYDROTEX® 6" FILTER POINT (FP600)**

Installation was pumped in place over a permanent liner

## LINER WIND BALLAST



PacifiCorp, Wyoming

### **HYDROTEX® 4" CONCRETE BALLAST BLOCK (CBB400)**

Installation was pumped in place in 20 ft intervals



## EMBANKMENT PROTECTION



Southern Company – Mississippi Power

### **HYDROTEX® 4" UNIFORM SECTION (US400) – SIMILAR TO SLOPE PAVING**

Embankment protection for hurricane wind generated waves in electric generating cooling pond  
Installation was pumped in place above and below water

## ROADSIDE DRAINAGE SWALE PROTECTION



Manufacturing Plant, Commerce, GA

### **HYDROTEX® 1" ENVIROMAT FX (FX100) – U.S. AND FOREIGN PATENTS PENDING**

Installation was pumped in place over a double net straw mat



5550 Triangle Parkway, Suite 220  
Peachtree Corners, Georgia 30092 USA

770 399 5051 | 800 225 0023 | [info@synthetex.com](mailto:info@synthetex.com)

[www.synthetex.com](http://www.synthetex.com)

