

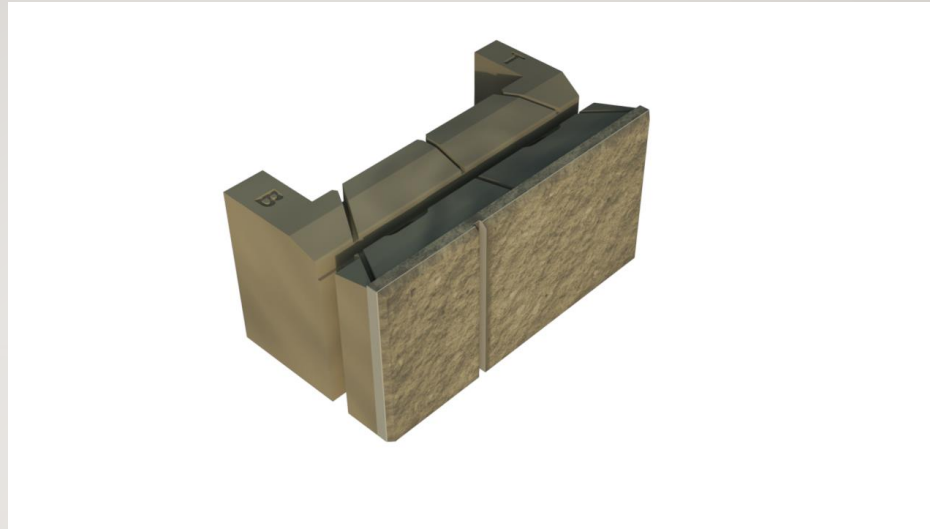
INTRODUCING...

OLYMPIA[®]

BY TENSAR[®]

"1 BLOCK, LIMITLESS PATTERNS"

-
- ✓ CAN BE SET HORIZONTAL
 - ✓ CAN BE SET VERTICAL
 - ✓ LIGHTWEIGHT – JUST 65 LBS. PER BLOCK
 - ✓ DESPITE LIGHT WEIGHT, 0.89 SF PER BLOCK
 - ✓ POSITIVE, MECHANICAL CONNECTION TO GEOGRID
 - ✓ MECHANICAL BLOCK-TO-BLOCK CONNECTION





Ashlar, columns, pilasters, running bond, stack bond, basket weave – if you can dream up the pattern, Olympia by Tensor can achieve it...with ***just one block***.

- 2 stock colors **of 1 block** create 4 block orientations and dozens of patterns
- 3 stock colors **of 1 block** create 6 block orientations and hundreds of patterns
- Producer and installer benefits include:
 - Less inventory for ashlar, pilaster, or any other configurations
 - Less concrete per block
 - More block and square feet per truck
 - Faster field setting due to lighter weight and 1 (and only 1) block style to set
 - NO COREFILL means \$0.50 to \$2.00+ per SF in material and installation savings
 - NO COREFILL means multiple rows can be stacked prior to backfilling



IMAGINE...

- 66% fewer blocks to make and inventory for 2 color ashlar
- 75% fewer blocks to make and inventory for 3 color ashlar
- Limitless patterns for your local market to design and specify
- Less concrete per SF to make, inventory, and ship
- Installer benefits of lighter weight, no corefill, 1 block type, and multiple-course stacking before backfilling

IMAGINE...OLYMPIA[®] by TENSAR

