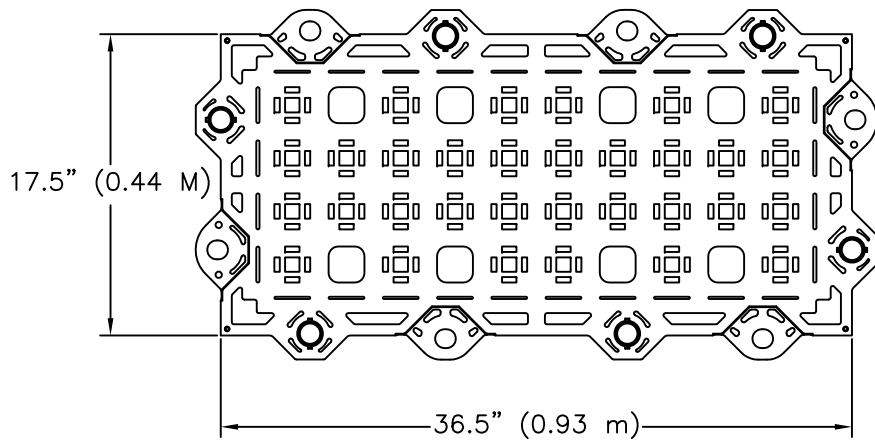
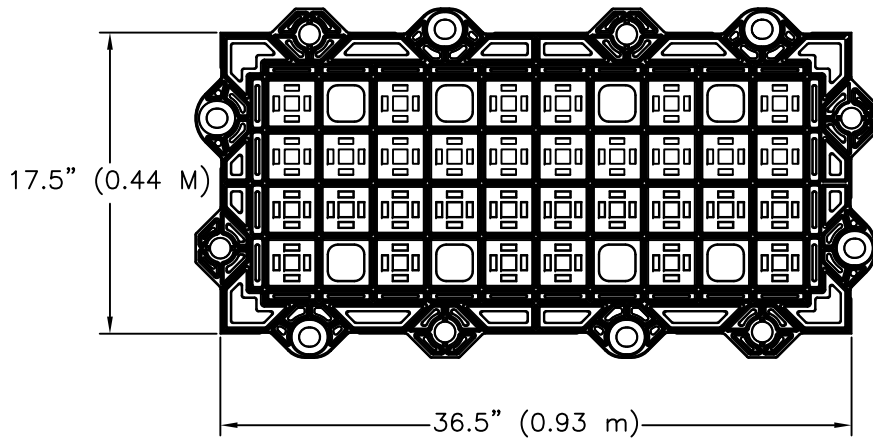


BOTTOM

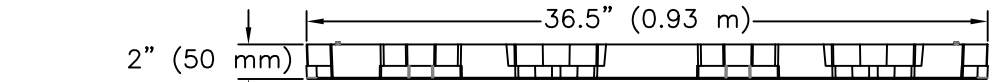


TOP



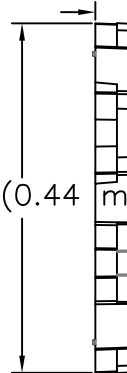
17.5" (0.44 m)


GEOTERRA® GTO MATERIAL SPECIFICATION	
MATERIAL	100% VIRGIN HD POLYETHYLENE
COLOR	RANGES FROM DARK SHADES OF GRAY TO BLACK
CHEMICAL RESISTANCE	SUPERIOR
CARBON BLACK FOR ULTRAVIOLET LIGHT STABILIZATION	1.5% - 2%
UNIT MINIMUM CRUSH STRENGTH @ 21°C (70°F)	550 psi (3790 kPa)
MATERIAL FLEXURAL MODULUS @ 21°C (70°F)	200,000 psi (1370 MPa)
NOMINAL DIMENSIONS (WIDTH x LENGTH)	17.5 in x 36.5 in (0.44 m x 0.93 m)
NOMINAL UNIT DEPTH	2 in (50 mm)
NOMINAL COVERAGE AREA	4.43 sqft (0.41 sq m)
CELLS PER UNIT	40
CELL SIZE	3.1 in x 3.2 in (79 mm x 81 mm)
TOP OPEN AREA PER UNIT	87%
BOTTOM OPEN AREA PER UNIT	20%
NOMINAL WEIGHT PER UNIT	11.8 lbs (5.35 kg)
UNITS PER PALLET	46

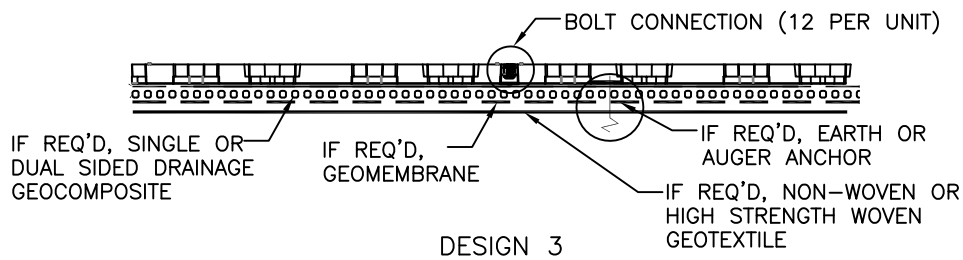
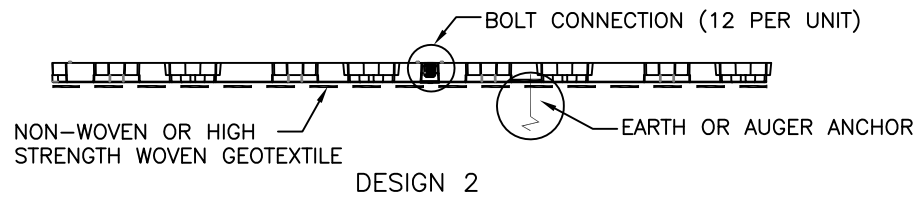
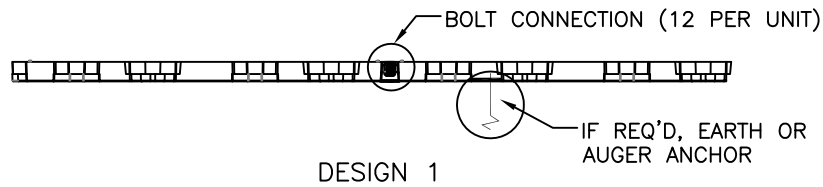


SIDE

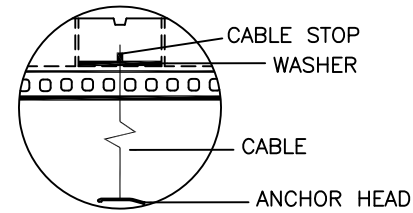
2" (50 mm)



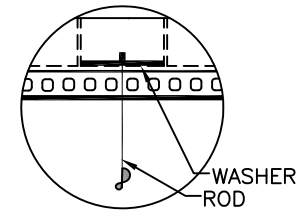
	PRESTO® PRODUCTS CO. 670 NORTH PERKINS STREET APPLETON, WI 54914 920-738-1342 WWW.PRESTOGEO.COM
	GEOTERRA GTO STRUCTURAL MAT SYSTEM PLANS/SECTIONS <small>GEOSYSTEMS® AND GEOTERRA® ARE REGISTERED TRADEMARKS OF PRESTO PRODUCTS COMPANY.</small>
DATE NOVEMBER 2013	FILE NAME GeoTerra GTO a1.dwg
SCALE NTS	SHEET 1



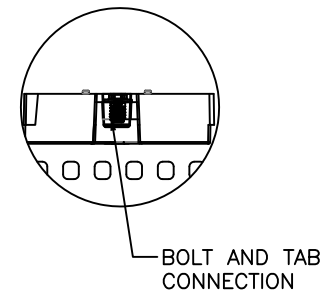
EARTH ANCHOR DETAIL




AUGER ANCHOR DETAIL



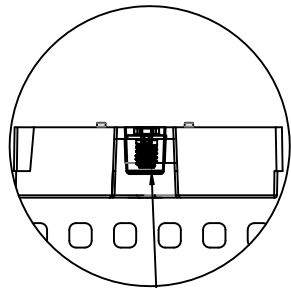
BOLT CONNECTION DEVICE DETAIL
(12 per GEOTERRA® UNIT)



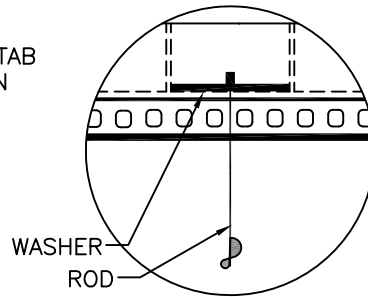
TYPICAL APPLICATIONS	
DESIGN	USES
1	PREVENTS RUTTING, PROTECT TURF, USE OVER SAND
2	IN ADDITION, CREATES UNIFORM, STABLE SURFACE, PROVIDES LOAD SUPPORT OVER POOR/WET SOILS
3	IN ADDITION, PREVENTS SUBGRADE DEGRADATION/CONTAMINATION, PROVIDES AN INTEGRATED, DRAINABLE SURFACE

	PRESTO® PRODUCTS CO. 670 NORTH PERKINS STREET APPLETON, WI 54914 920-738-1342 WWW.PRESTOGEO.COM
	GEOTERRA® GTO STRUCTURAL MAT SYSTEM TYPICAL SECTIONS <small>GEOSYSTEMS® AND GEOTERRA® ARE REGISTERED TRADEMARKS OF PRESTO PRODUCTS COMPANY.</small>
DATE NOVEMBER 2013	FILE NAME GeoTerra GTO c1.dwg
SCALE NTS	SHEET 1

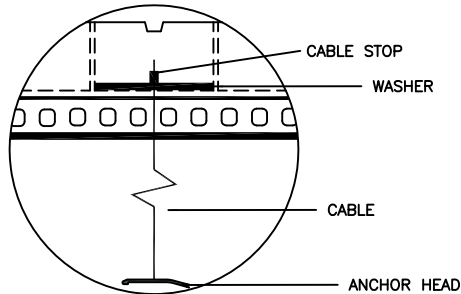
BOLT CONNECTION DETAIL



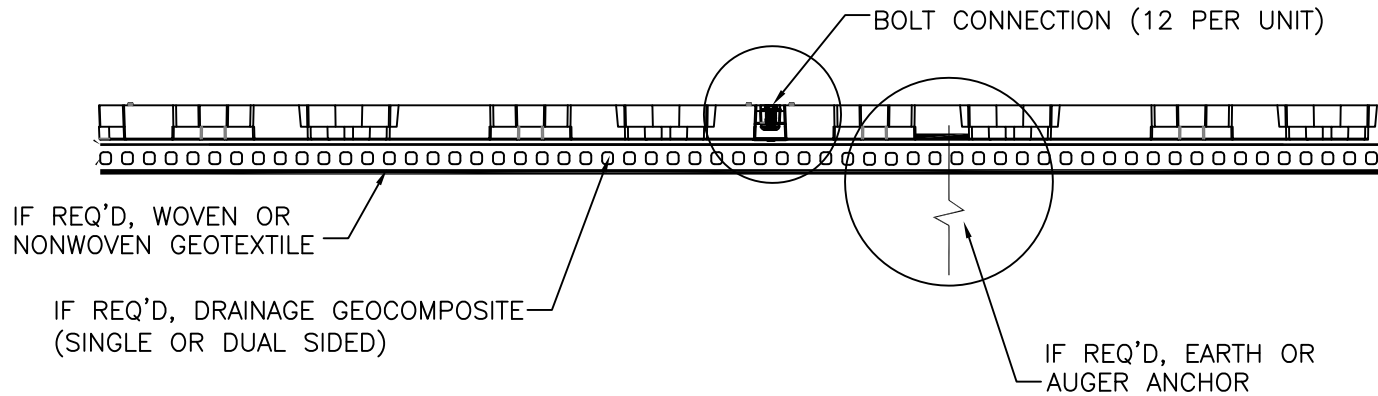
AUGER ANCHOR DETAIL



EARTH ANCHOR DETAIL




SYSTEM COMPONENTS



GEOTERRA® GTO MATERIAL SPECIFICATION

MATERIAL	100% VIRGIN HD POLYETHYLENE
COLOR	RANGES FROM DARK SHADES OF GRAY TO BLACK
CHEMICAL RESISTANCE	SUPERIOR
CARBON BLACK FOR ULTRAVIOLET LIGHT STABILIZATION	1.5% - 2%
UNIT MINIMUM CRUSH STRENGTH @ 21°C (70°F)	550 psi (3790 kPa)
MATERIAL FLEXURAL MODULUS @ 21°C (70°F)	200,000 psi (1370 MPa)
NOMINAL DIMENSIONS (WIDTH x LENGTH)	17.5 in x 36.5 in (0.44 m x 0.93 m)
NOMINAL UNIT DEPTH	2 in (50 mm)
NOMINAL COVERAGE AREA	4.43 sqft (0.41 sq m)
CELLS PER UNIT	40
CELL SIZE	3.1 in x 3.2 in (79 mm x 81 mm)
TOP OPEN AREA PER UNIT	87%
BOTTOM OPEN AREA PER UNIT	20%
NOMINAL WEIGHT PER UNIT	11.8 lbs (5.35 kg)
UNITS PER PALLET	46

	PRESTO® PRODUCTS CO. 670 NORTH PERKINS STREET APPLETON, WI 54914 920-738-1342 WWW.PRESTOCEO.COM
	GEOTERRA® GTO STRUCTURAL MAT SYSTEM SYSTEM COMPONENTS <small>GEOSYSTEMS® AND GEOTERRA® ARE REGISTERED TRADEMARKS OF PRESTO PRODUCTS COMPANY.</small>
DATE NOVEMBER 2013	FILE NAME GeoTerra GTO b1.dwg
SCALE NTS	SHEET 1