

SHOREFLEX[®]
VEGETATED CONCRETE BLOCK MAT

SHOREFLEX®

ELIMINATES EROSION.

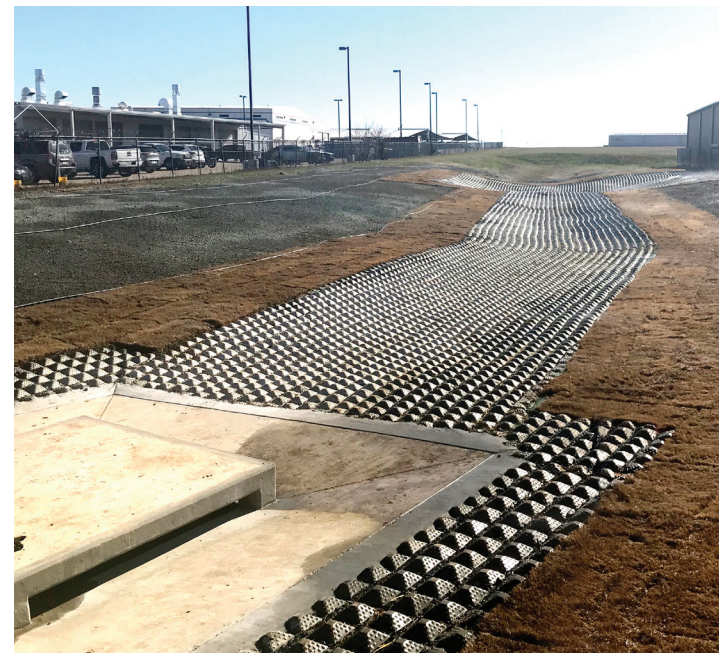
EASY INSTALL.

GROWS GREEN.

UNIFORM AND CONSISTENT PERFORMANCE.

APPLICATIONS

- Bridge Abutment
- Canoe-Kayak Launch
- Channel Lining
- Curb Inlet
- Detention Basin
- Existing Outlet
- Letdown Channel
- Low Volume Channel
- New Outlet
- Overflow
- Pipeline Protection
- Roadside Channel
- Shoreline
- Slope Protection
- Wind & Solar Farm



ShoreFlex® Product Properties

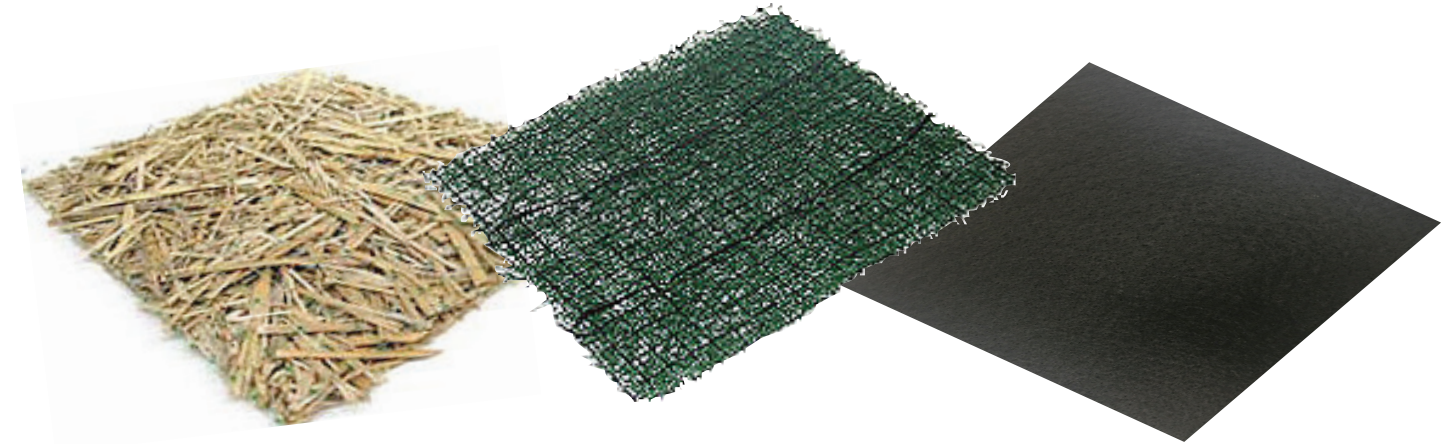
ShoreFlex® is offered in a wide variety of sizes to fit your specific needs. Custom sizes are available at additional cost. Max weight shown is max roll weight for shipping estimation.



WIDTH	LENGTH	8'	16'	25'	32'	50'
4'	ROLL WEIGHT (lbs)	352	704	1,100	1,408	2,200
	MATS/TRUCKLOAD	127	63	40	31	20
8'	ROLL WEIGHT (lbs)	704	1,408	2,200	2,816	4,400
	MATS/TRUCKLOAD	63	31	20	15	10
10'	ROLL WEIGHT (lbs)	880	1,760	2,750	3,520	5,500
	MATS/TRUCKLOAD	51	25	16	12	8
16'	ROLL WEIGHT (lbs)	1,408	2,816	4,400	5,632	8,800
	MATS/TRUCKLOAD	31	15	10	7	5

CUSTOM SIZES AVAILABLE UP TO 16' WIDE
ROLL WEIGHT IS MAX SHIPPING WEIGHT

ShoreFlex® Backing Options



Double Net Straw
DNS 2

Turf Reinforcement Mat
GS50

Non-Woven
Geotextiles

Shoreflex® can provide your project with various erosion control backings for your concrete mats. Customized backings allow for site specific seed and soil retention, providing different levels of longevity.

SHOREFLEX® TECHNICAL INFORMATION

Blocks	5,000 PSI, Wet-Cast Portland Cement / ASTM C39/C39M
Block Size	6.5"x 6.5"x 2.5" / Avg. Weight: 4.5 lbs
Percentage Open Area (POA)	30% min.
Material Weight	Min. 10 lbs. / sf
SF Per Load	4,000 to 4,300 lbs/TL (pending trucking ability and roll sizes)
Interlocking	Polypropylene 30/30 w/ 2,000 lb/ft biaxial strength Grid Aperture 1.6"
Backing Options	Double Net Straw (DNS2), GS 50, Non-Woven Fabrics
Anchor Types	18" Rebar "U" & Earth Anchors Stainless, Galvanized or Steel

ShoreFlex® Roll Delivery Options

- Onsite Installation Support
- Multiple Anchoring Systems Available





Test Channel Setup



Test Channel Outfall



High Flow in Channel



Post Test

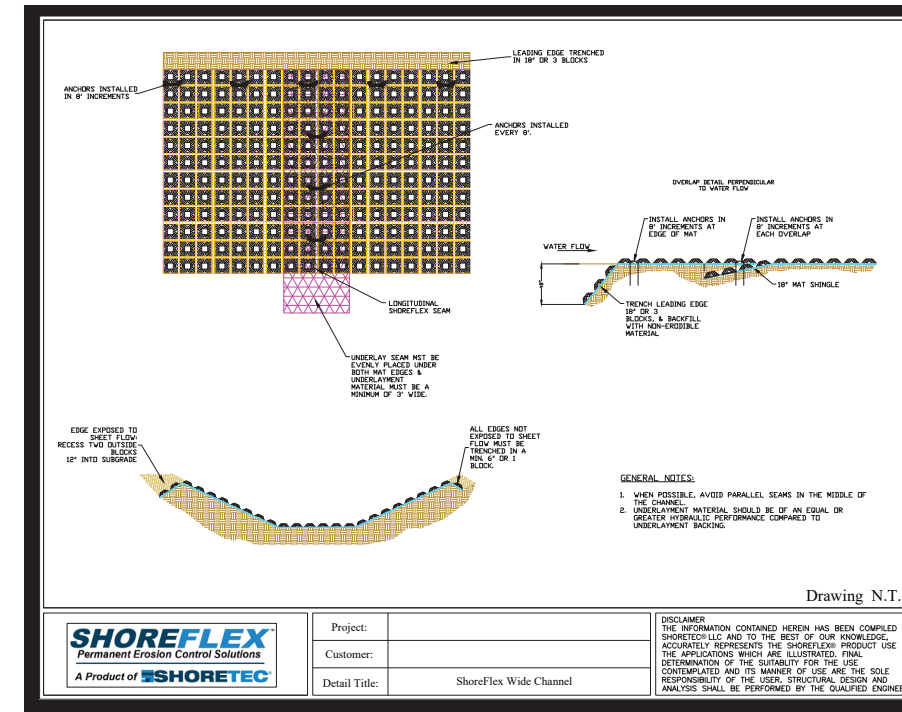
Testing: Current federal design procedures utilize bed shear stress for primary stability analysis. This approach takes into consideration: velocity, depth of flow, and energy slope gradient to determine how much hydraulic energy (bed shear) is incident on the ShoreFlex® mats. ShoreFlex® has been flume tested to withstand shear stresses of 18lb/ft² and velocities of 30 ft/s.

HEC-RAS

HEC-RAS has been developed for the U.S. Army Corps of Engineers (USACE). HEC-RAS is a hydraulic modeling system used to properly analyze flow conditions in multiple situations.

<http://www.hec.usace.army.mil/software/hec-ras/downloads.aspx>

SHOREFLEX® DETAILS



Installation Details

Typical installation details available at www.shoreflex.com

Custom installation details available upon request.

Performance

Test	Tested Value	Bed Slope	Soil Classification	Limited Value
ASTM 6460-12 Shear Stress	18+ psf	10% & 20%	Clayey Sand (USCS) Loam (USDA)	18+ psf
ASTM 6460-12 Velocity	30+ ft/sec	10% & 20%	Clayey Sand (USCS) Loam (USDA)	30+ ft/sec



Download our “**PRODUCT SPECIFICATIONS**” on line at SHOREFLEX.COM

• ShoreFlex® Standard:	Regular Black Polypropylene Grid GS50 Backing
• ShoreFlex® Ultra UV:	Tan Polypropylene UV Resistant GeoGrid with GS50 Backing
• ShoreFlex® Pro:	Black Polypropylene GeoGrid with GS50 & DNS-50
• ShoreFlex® Ultra UV Pro:	Tan Polypropylene UV Resistant GeoGrid with GS50 & DNS-50 Backings

Multiple anchoring systems available.



www.shoreflex.com
800 575 7293



SHOREFLEX[®]

PREMIER
CONCRETE PRODUCTS

Customer should verify with the product manufacturer that customer has the most current **ShoreFlex[®]/Premier Concrete[®]** specifications for the product ordered or purchased. The **ShoreFlex[®]/Premier Concrete[®]** system can be used in the application described in our literature and on our website, provided proper installation and engineering principles are followed. Professional engineering should be consulted before installation of **ShoreFlex[®]/Premier Concrete[®]** units to assure appropriate design and use. ALL EXPRESSED OR IMPLIED WARRANTIES, INCLUDING THOSE OF MERCHANTABILITY AND FITNESS FOR A PARTICULAR PURPOSE ARE DISCLAIMED. **ShoreFlex[®]** is a trademark of Premier Concrete Products, Inc.